

Products for treating surfaces and detergents

Cleaning, protection and finishing

LITOKOL®

> Index

> Products for treatment

Litoseal Terrazze	12
Litocare Matt	14
Litogres Protector	16
Litostone Protector	18
Litocare Stone Glossy	20
Litowax Gres & Natural Stone	22
Litogrip Floor	24
Litostain Cleaner	26

> Detergents

Litonet EVO / Litonet Gel EVO	34
Litonet Pro	36
Litoclean	38
Litoclean EVO	40
FillCleaner EVO	42
Litoshine EVO	44



Surface treatment, cleaning and finishing

To maintain the condition of **indoor and outdoor floors** over time, it's good practice to perform regular **surface maintenance** and to know which products are most suited to ensuring the best performance over time.

Litokol offers a complete family of products specifically designed to meet the needs of those looking for **professional products** that are **simple** to use, to treat **various types of surfaces**: to remove stains, grout residue, protect and maintain different types of materials over time.

By using specific **water- and oil-repellent treatments**, the surface is protected against both water-based (coffee, wine, ink) and oil-based (food-grade oil, motor oil) staining agents.

To facilitate the **choice of products** it is important to know the characteristics of

the materials used in floors and therefore identify the procedures that are guaranteed not to alter the **beauty** and **unique properties of the selected material** over time.

Products for treatment

Litokol treatment products are organised into:

1. Water-repellent protectors

Litoseal Terrazze

2. Natural effect stain protectors

Litostone Protector

Litogres Protector

3. Colour enhancing stain protectors

Litocare Matt

Litocare Stone Glossy

4. Surface finishes

Litowax Gres & Natural Stone

5. Non-slip protectors

Litogrip Floor

6. Cleaners

Litostain Cleaner



Litogrip Floor



Litoseal Terrazze



Litocare Matt



Litostain Cleaner



Litogres Protector



Litocare Stone Glossy



Litostone Protector



Litowax Gres & Natural Stone



Cleaning and maintenance of all surfaces



SURFACES	Litostone Protector	Litogres Protector	Litocare Matt
Marble (all finishes except for polished finishes) Clay Terracotta	•		•
Granite (all finishes except for polished finishes)	•		•
Polished marble	•		•
Polished granite	•		•
Natural stone: sandstone quartz limestone slate lava stones	•		•
Reconstituted marble	•		•
Reconstituted quartz	•	•	•
Porcelain stoneware Structured porcelain stoneware		•	•
Natural clinker			
Polished porcelain stoneware		•	•
Lapped porcelain stoneware		•	•
Enamelled ceramic Enamelled clinker		•	•
Glass mosaics		•	•
Ceramic mosaics		•	•
• Cementitious grouting	•	•	•
• Epoxy grouting		•	•



Litocare Stone Glossy	Litowax Gres & Natural Stone	Litogrip Floor	Litoseal Terrazze
•	•		•
•	•	•	•
			•
		•	•
•	•		•
		•	
	•	•	•
		•	•
			•
		•	•
			•
		•	•
			•

> Litoseal Terrazze



Anti-infiltration

Anti-infiltration water-repellent protective impregnator for terraces

- Solvent-based impregnator
 - High penetration
 - Excellent water-repellent and anti-rising damp properties.
- The product's characteristics guarantee high-level water repellence on surfaces to which it is applied, eliminating problems caused by the penetration of water into small grooves, pores and joints.
- The product penetrates the inside of the laid surface, creating a barrier against rising humidity and salt damp, while allowing vapour permeation.
- It prevents the formation of mould and efflorescence, is UV-resistant and does not have a yellowing effect on the treated material.

Fields of application

Litoseal Terrazze is recommended on all materials: **ceramics, stoneware, porcelain stoneware, clinker bricks, marble, granite, terracotta, stones, etc. and cement grouting**. It is particularly suited to solve water infiltration problems in exterior surfaces exposed to rain and freezing weather.

- Surface treatment time: Approx. 5 minutes
- Set to light foot traffic: 2 / 4 hours
- Consumption: 10-15 m²/l

Untreated surface:
the water penetrates through
small cracks



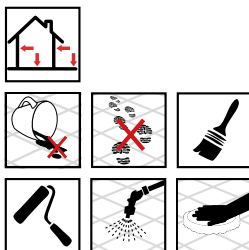
After washing the surface, spread evenly, impregnating the joints and cracks well.
After 5 minutes, remove any excess product using a cloth.



Litoseal Terrazze forms a water-repellent protective coating on surfaces, guaranteeing a consolidated and transpiring effect



> Litocare Matt



MATT colour enhancing effect

> Untreated surface



> Apply a thin and even coat of pure product onto a clean and dry surface. After about 10 minutes, remove any excess product left on the surface using a traditional single disc machine and white disc pad or absorbent cloth.



For both
indoors and
outdoors



A protective treatment with matt colour enhancing effect to improve the appearance of ceramic or natural stone surfaces and epoxy and cementitious grouting

- A solvent-based, stain-resistant and dirt-proof protective impregnator
- Matt effect
- Intensifies the colour of ceramic or natural stone coverings
- Restores the colour of epoxy and cementitious grouting affected by efflorescence.

Materials treated with Litocare Matt are protected against oil, grease, dirt, liquids, etc.. The product is UV-resistant and thus suitable for use on both interior and exterior dry surfaces.

This treatment facilitates routine maintenance, reducing surface friction and inhibiting the penetration of dirt.

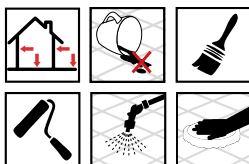
Fields of application

Suitable for the treatment of both medium-high absorbency and compact surfaces such as **natural stone (marble and quartz), also with antique finish, pebbles, polished and smooth surfaces, polished porcelain stoneware, natural stoneware, quartz and marble agglomerates, floor and wall joints** made with epoxy or cementitious grouting. The product dries after just a few hours and guarantees long-lasting performance without developing a film on the surface.

- Surface treatment time: Approx. 10 minutes
- Set to light foot traffic: at least 6 hours
- Consumption: 15-20 m²/l

> Litogres Protector

Ceramic and porcelain stoneware



Water- and oil-repellent stain-resistant impregnator for ceramics and porcelain stoneware

- Solvent-based stain-resistant impregnator
- Offers stand-out and long-lasting protection, preventing staining agents such as red wine, oil, ink, coffee etc. from penetrating the pores of the material, thus allowing spillages to be promptly removed.
- Does not alter the colour of the material.
- It can also be used as a pre-treatment before grouting.

The product is suited to compact, low absorbency surfaces that require protection inside their pores, normally created by surface machining treatments such as polishing or lapping.

Fields of application

Suitable for **ceramics, porcelain stoneware and compact, low absorbency materials**. Specifically for **polished or honed ceramics**. Also suitable for **recomposed quartz surfaces**.

- Surface treatment time: Approx. 10 minutes
- Set to light foot traffic: 4-6 hours
- Consumption: 25-30 m²/l

> Apply the pure product onto a clean and dry surface, evening out any excesses. Leave the product to penetrate for about 10 minutes. Subsequently remove any leftover product in order to restore dryness to the surface, which should be free of any residue.

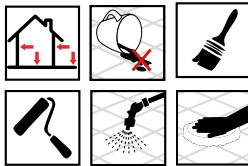


> Treated surface



> Litostone Protector

Marble and Natural Stone



Water- and oil-repellent stain-resistant impregnator for marble and granite

- Solvent-based stain-resistant impregnator
- Offers stand-out and long-lasting protection.
- Does not alter the colour of the material.
- Prevents staining agents such as red wine, oil, ink, coffee etc. from penetrating the pores of the material, thus allowing spillages to be promptly removed.
- It can also be used as a pre-treatment before grouting.

Fields of application

Suitable for the stain-resistant treatment of **marble and granite, natural stone, recomposed marble or granite, natural materials with medium-low absorbency rate.**

- Surface treatment time: Approx. 10 minutes
- Set to light foot traffic: 4-6 hours
- Consumption: 15-20 m²/l

Untreated surface



Apply the pure product onto a clean and dry surface, evening out any excesses. Leave the product to penetrate for about 10 minutes. Subsequently remove any leftover product in order to restore dryness to the surface, which should be free of any residue.



Treated surface

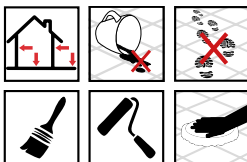


> Litocare Stone Glossy



GLOSSY EFFECT

Marble and Natural Stone



Glossy effect, stain-resistant impregnator for non-glossy marble and granite, terracotta and materials with a medium-high absorbency rate

- Solvent-based stain-resistant and dirt-proof protective impregnator
- It creates a warm, wet effect, featuring excellent dirt-proof, scratch-proof and stain-resistant properties
- Gives the surface a semi-glossy appearance.
- This treatment facilitates routine maintenance, reducing surface friction and inhibiting the penetration of dirt.

Fields of application

The product is recommended for **natural stone (marble, granite, pebbles etc.) with non-glossy finishes, terracotta and materials with a medium-high absorbency rate.**

- Surface treatment time: Approx. 5-10 minutes
- Set to light foot traffic: at least 6 hours
- Consumption: 15-20 m²/l

Apply a thin and consistent film of pure product on a dry and clean surface using a brush, roller or fleece. After application, wait approximately 5-10 minutes depending on the absorbency rate of the material, then spread the excess product evenly and leave to dry.



Particularly in the case of more compact surfaces, the product tends to create a semi-glossy film that can be brushed once dry using a white non-abrasive pad to enhance shine.

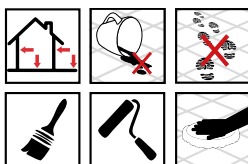


> Litowax Gres & Natural Stone



SATIN-FINISH
EFFECT

Terracotta and Stone



Satin-finish effect protector for structured ceramics, stone and terracotta

- A water-based satin finish polymer coating used to treat surfaces.
- Offers a soft, matt effect
- Gives the surface excellent dirt-proof, scratch-proof and stain-resistant properties.
- Application facilitates routine maintenance, reducing surface friction.

Fields of application

The product is recommended for use on all natural and non-natural materials with a **surface roughness able to ensure the adhesion of the wax.**

The product is designed for **interior use only on terracotta, natural or structured porcelain stoneware, structured ceramics and stone.**

- Consumption: 10-15 m²/l
- Set to light foot traffic: 4 hours

> Untreated surface



> Dilute the product with water in the case of less absorbent surfaces (porcelain stoneware, ceramics), or use in its pure form on surfaces with a medium-high absorbency rate (terracotta, stone). Apply a thin and even coat of product onto a dry and clean surface and leave to dry for about 4 hours



A
second coat
will enhance the
treatment, shine
and protection

> Litogrip Floor



Non-slip



Non-slip treatment for stoneware, granite, quartz and ceramic mosaics

- A water-based non-slip treatment for silica-based materials.
- It reacts with the surface, creating micro escape routes for the water, facilitating drainage and increasing surface friction.

Fields of application

Suitable for interior and exterior use on all **silica-based materials such as stoneware, ceramics, granite, quartz, ceramic mosaics, etc.**

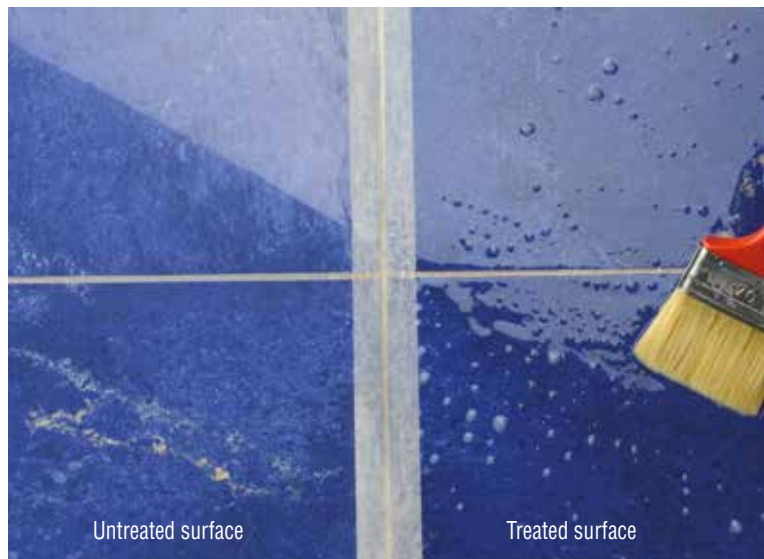
- Surface treatment time: From 15 to about 60 minutes
- Consumption: 15-20 m²/l

> Application

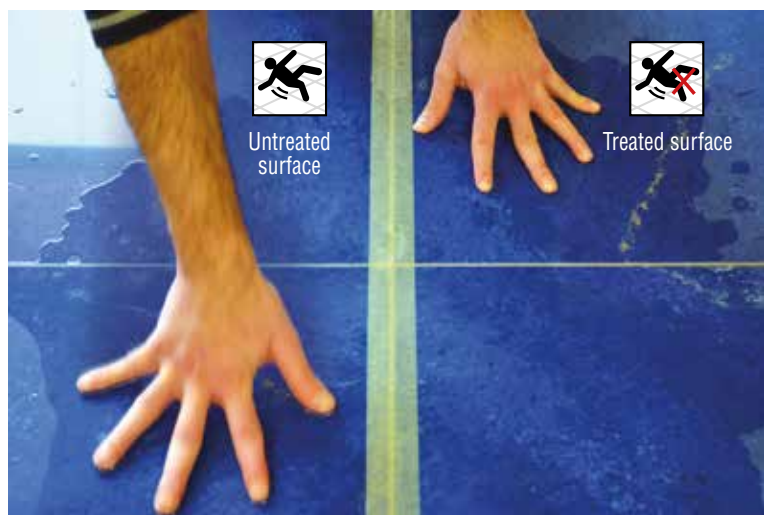
Given the variety of materials, a preliminary test must be carried out to identify the best contact time between the surfaces and Litogrip Floor. The test must be carried out on an unlaidd sample or non-visible section. Apply a good quantity of pure product onto the surface using a brush, roller, airless sprayer, fleece. Leave the product to work for the identified period of time, keeping the surface constantly and evenly wet with the product. After this time, remove any excess and rinse well with water before testing the final result. The slip test must be performed on a wet surface.

Indicatively speaking, the contact times are:

- Ceramics and stoneware: from 10 to 40 minutes.
- Clinker bricks and quartz-based agglomerates: from 30 to 60 minutes.
- Granite: from 60 to 90 minutes.



> Slip test



To check the efficacy of the application, wet the treated and untreated surface, pressing on both with the palm of your hand. The grip of the treated portion should prevent the hand from slipping on the wet surface, unlike the untreated surface.

> Litostain Cleaner

Universal cleaner



> Application

The pure product is applied directly on the stain and left to act for 10 to 20 minutes in the case of fresh stains, or even overnight for more stubborn stains.

After this time, remove the product using a clean cloth and rinse well. If there is an improvement after the first application, repeat the process using the same methods.



Cleaner for coloured stains on all materials

- A water-based gel cleaner for the removal of coloured stains.
- Can be used on all materials.

Fields of application

Litostain Cleaner is a versatile product that can be used on **all ceramic and natural stone surfaces**.

It easily extracts coloured staining agents such as: coffee, red wine, fruit, fruit juices, mould, algae, ink etc.

Its viscous formulation ensures greater contact time on the stain and also allows vertical application.

- Surface treatment time: From 10 to 20 minutes, up to a few hours
- Consumption: dependent on the size of the stain

> Untreated surface



Also suitable for natural stone



> Detergents

Surface cleaning

It's not always easy to identify the **type of floor stain** and we often think it can no longer be removed, thus permanently ruining the surface.

Don't panic! Is your stoneware stained?
Are you wondering how to clean your marble top?

In this section you'll find the answers to all your **surface cleaning** and **maintenance problems**.



Zero risk for the user

- ✓ Non corrosive
- ✓ Non toxic
- ✓ Non-hazardous to the environment



Zero risk in transportation

- ✓ Product without restrictions for transport by road, sea, air and rail.
- ✓ No ADR limitations for transport by road.
- ✓ No IMO containers required for transport by sea.



> Litonet EVO Litonet Gel EVO

Epoxy stains



Liquid detergents for the removal of epoxy grout stains and residue from all types of ceramic tiles, mosaics and natural stone.

Also efficient for the deep cleaning of tough dirt

- The two detergents used in their pure form are particularly effective for the removal of residue and stains left by epoxy mortars such as Starlike® EVO and EpoxÉlite EVO.
- Removal of stains on polished porcelain stoneware left by previous grouting performed using dark coloured cementitious grouts.

Fields of application

- De-greasing alkaline detergent: effective in removing greasy residue, organic dirt deposits accumulated over time and wax from all natural or artificial surfaces. In this case, dilute the product at a rate of 30% in water.
- Deep cleaning detergent for porous materials: effective against dirt trapped in the pores of materials such as full surface honed and full body polished porcelain stoneware. Dilute the product at a rate of 30% in water.
- Periodic deep cleaning detergent: effective on all types of surfaces characterised by intense dirt, which cannot be removed using commonly sold detergents.
- Detergent used to clean resilient flooring such as PVC and linoleum.
- LITONET GEL EVO can also be used as a universal cleaner for hard surfaces, with proven efficacy in the removal of grease and organic deposits. It is used in its undiluted form and then rinsed.

Apply the products either pure or diluted.
Rub with white felt (item 109GBNC) or with a single disc machine.
Collect the cleaning solution using a sponge, rubber squeegee broom or wet vacuum cleaner.
Finally, rinse well with clean water and dry with a cloth.



> Litonet Pro



Cured epoxy stains

High viscosity liquid detergent for the removal of stains and consolidated epoxy grout residue from all types of ceramic tiles and mosaics.

Ideal for the removal of graffiti, spray paints and ink. Breaks down silicone caulk residue.

- Litonet Pro is a liquid detergent with an alkaline pH ideal for the removal of catalysed epoxy residue, even a long time after grouting, from all types of ceramic tiles, including delicate surfaces such as honed ceramics, glass or ceramic mosaics, natural stone.
- Suitable for interior and exterior walls and floors.

Fields of application

- In its pure form, thanks to its excellent dissolving properties, it is particularly effective in removing stains and consolidated residue left behind by epoxy mortars such as Starlike® EVO, Starlike® Crystal EVO, Starlike® ColorCrystal EVO and EpoxÉlite EVO, even on materials that are particularly difficult to clean such as thin pressed or compacted slabs, timber effect and micro-groove surfaces.
- It is gentle on materials and does not cause corrosion.
- Also ideal for the removal of graffiti, spray paints and ink.
- Effective in removing silicone caulk residue and stains produced by organic polymers.

> Apply the product in its pure form, spreading it evenly.



Leave to work for **15-30 minutes**.

> Rub the surface with white felt (item 109GBNC) or with a single disc machine. It is recommended to mechanically rub the product when applied to facilitate its removal.



Collect the cleaning solution, rinse with clean water and dry with a cloth.



> Litoclean



Descaler

Liquid acid descaler for the cleaning of ceramic wall and floor coverings.

Produces a descaling effect similar to that of strong acids (muriatic, hydrochloric, sulphuric) with the advantage that it doesn't generate any toxic or harmful fumes.

Fields of application

- Suitable for the cleaning of interior and exterior ceramic walls and floors to remove:
 - cement, limescale stains.
 - adhesive or cementitious grout residue, even coloured.
 - lime efflorescence in joints.
- Also suitable for the removal of lime and saltpetre efflorescence from cement renders and concrete.

- > Wet the surface to be treated with clean water, saturating the cementitious joints. Spread the product evenly.



Leave to work for **5 minutes.**

- > Clean the surface with felt or an abrasive sponge, removing the scale deposits. Collect the acid solution from the floor using a sponge or rubber squeegee broom and rinse with plenty of clean water.



> Litoclean EVO



Liquid acid descaler



Produces a descaling effect similar to that of strong acids (muriatic, hydrochloric, sulphuric) with the advantage that it doesn't generate any toxic or harmful fumes. Formulated with latest generation surfactants able to dissolve all types of residue left by cementitious grouts.

Fields of application

- Effectively and quickly removes cement and cementitious grout residue, saline and calcareous deposits, tempera and limescale from ceramic tiles, porcelain stoneware, glass mosaics, terracotta, antique finish marble etc.
- The product does not damage standard cementitious grout and can remove any superficial efflorescence build-up, restoring the grout's uniform colour.
- It can be used as a detergent for exterior surfaces to eliminate dirt deposits such as algae and inorganic residue.
- It is very effective on greasy residue in completed building sites

> Dilute the product with cold water, pour it onto the surface to be cleaned and spread evenly.



Leave to work for 5-10 minutes.



Proceed to remove any remaining stains or scale deposits with abrasive felt. Collect the residual liquid. Finally, rinse well with water and dry carefully.



FillCleaner EVO



Cleaner for FillGood EVO



Ecological gel to remove any residue left by grouting performed using the single component, ready-to-use water-based polyurethane sealant, FillGood EVO.

- Ecological cleaner with neutral pH, delicate on ceramic surfaces, comprised of ingredients derived from natural, completely biodegradable substances.

Fields of application

- FillCleaner EVO is the specific cleaner used to remove resinous residue left by grouting performed using the polymeric mortar for joints, FillGood EVO, from the surface of tiles and glass mosaics.
- Its high viscosity makes it also perfect for wall applications without slippage. The product is very efficient on surface residue without damaging the polymeric mortar used in the joints.
- FillCleaner EVO is also perfect as a degreaser for ceramic surfaces in contact with foodstuffs, such as kitchen countertops.

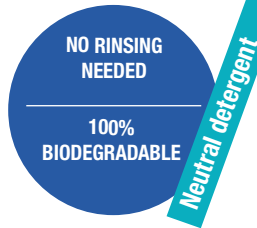
- Spread the pure product onto the surface and after a few minutes, rub with some white felt, then rinse with a damp sponge and dry the surface with a clean cloth.



- It is recommended to apply FillCleaner EVO on limited surface areas (about 1-2 m²) so that it does not remain in contact with the grouting for more than 5-7 minutes.



> Litoshine EVO



A water-based neutral detergent formulated using eco-friendly plant-based materials with rapid biodegradability, which are not hazardous to human health and the environment.

- Specific for **daily cleaning of all surfaces**, especially low-absorbency floors such as ceramics, porcelain stoneware, timber and resin floors. **Its wax- and solvent-free formulation does not leave a film or streaks on the surface**, guaranteeing an excellent level of cleanliness and a fresh clean scent.

Fields of application

- For indoor and outdoor use. Thanks to its neutral formula, the product **can be used on any surface**, even the most delicate ones, without the risk of creating surface aggressions: ceramics, natural, polished or honed stoneware, ceramic or glass mosaics, timber and resin floors in the Spaziocontinuo® line, such as Spaziocemento and Spazioresina.
- If used in the right concentration, it does not require rinsing and is particularly recommended for all surfaces with low- or zero- absorption properties.

> Advantages

- Concentrated product: 2-3 caps in a bucket of water
- Does not need rinsing
- Does not leave any type of residue on the surface
- Does not leave stains
- Avoids the formation of surface streaks
- Leaves a pleasant and fresh clean scent
- Eco-friendly formula
- No risk classification
- Versatile product. Can be used on all surfaces
- Minimum risk labelling and not subject to restrictions for transport by road, air, rail and sea.

> Application

The product is concentrated and must be diluted in water before use. Pour 1-2 caps into 5 litres of water (a bucket) for less-absorbent surfaces, or 2-3 caps for natural stone and terracotta. Wash the floors using traditional manual and machine methods. If the product is used in the recommended concentrations, rinsing is not necessary. The product should not be too concentrated in order to avoid any residue.



> The stain specialist

A highly requested product that bridges a gap in the treatment range.

It is a professional detergent for the daily cleaning of all surfaces, which does not need rinsing and **does not leave any marks thanks to the wax- and solvent-free formula**. Litoshine EVO not only removes pre-existing stains, it also prevents their formation, maintaining the floor's shine unaltered over time. The product is therefore perfect for mass consumption: **it is economical** because only two small measuring caps of product need to be diluted in water, **it is universal** and also suitable for the daily cleaning of resinous surfaces, **it is neutral** and therefore perfect for cleaning timber surfaces, it has **minimum risk labelling and is 100% biodegradable**.



Store Display

- > **Litoseal Terrazze**
1 L Box 12 pz
- > **Litocare Matt**
1 L Box 12 pz
- > **Litogres Protector**
1 L Box 12 pz
- > **Litostone Protector**
1 L Box 12 pz
- > **Litocare Stone Glossy**
1 L Box 12 pz
- > **Litowax Gres & Natural Stone**
1 L Box 12 pz
- > **Litogrip Floor**
1 L Box 12 pz

- > **Litonet EVO**
1 L Box 12 pz
5 L Box 4 pz
- > **Litonet Gel EVO**
0,75 L Box 12 pz
- > **Litonet Pro**
0,5 L Box 12 pz
- > **Litoclean**
1 kg Box 24 pz
5 kg Box 4 pz
- > **Litoclean EVO**
1 L Box 12 pz
- > **FillCleaner EVO**
0,75 L Box 12 pz
- > **Litostain Cleaner**
0,5 L Box 12 pz
- > **Litoshine EVO**
1 L Box 12 pz



Product range

Note:
it is advisable
to clarify the
type of transport
required (via land,
sea, air) for the
products indicated in
this brochure.

LITOKOL[®]

HI-PERFORMANCE BUILDING PRODUCTS

Litokol spa
via Giovanni Falcone 13/1
42048 Rubiera (RE)
Tel +39 0522 622811
Fax +39 0522 620150
info@litokol.it
www.litokol.it

