

A photograph of a modern building entrance featuring large glass doors and windows. A circular, dark-colored entrance mat is placed on the light-colored tiled floor in front of the doors. The building has a light-colored facade and a prominent overhang above the entrance. The image is partially overlaid by a teal graphic element on the right side.

# Access

Here you will find a great range of Entrance Matting and Anti Slip Tactiles.

Our entrance mats give you the ability to turn any doorway into a warm and welcoming entrance way whilst minimising the level of dirt entering the building. A clever 3-zonal system can remove 90% of dirt within the first 4.5 - 5 metres of entering a building.

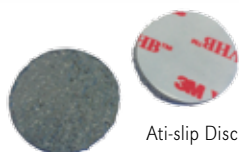
We are proud to bring to market our range of Anti Slip Tactiles.

We have a solution to any slippery problem a customer may have. Our RezTred or Bumpeez range are perfect for stair nosings, kitchens, platforms, edges, basically anywhere you can think of and can be used internally and externally.



Shankd

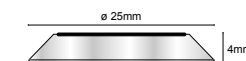
Self Adhesive



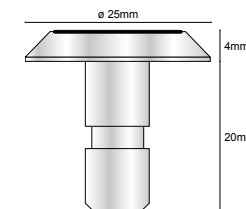
Anti-slip Disc

CODE	DESCRIPTION	H (mm)	W (mm)	D (mm)	L (m)	BOX
FTSSD25.01	Stainless Steel Anti-Slip Tactile - Shankd			ø25		20
FTSSD25.16	Stainless Steel Anti-Slip Tactile - Shankd			ø25		20
FTSSD25.47	Stainless Steel Anti-Slip Tactile - Shankd			ø25		20
FTSCD25.84	Stainless Steel Circle Tactile - Shankd			ø25		20
FTCHD25.84	Stainless Steel Crosshatch Tactile - Shankd			ø25		20
FTSAS25.01	Stainless Steel Anti-Slip Tactile - Self Adhesive			ø25		20
FTSAS25.16	Stainless Steel Anti-Slip Tactile - Self Adhesive			ø25		20
FTSAS25.47	Stainless Steel Anti-Slip Tactile - Self Adhesive			ø25		20
FTSSA25.84	Stainless Steel Circle Tactile			ø25		20
FTSCA25.84	Stainless Steel Crosshatch Tactile - Self Adhesive			ø25		20
FTNYD25.01	Nylon Anti-slip Tactile - Shankd			ø25		20
FTNYD25.16	Nylon Anti-slip Tactile - Shankd			ø25		20
FTNYD25.47	Nylon Anti-slip Tactile - Shankd			ø25		20
FTNCD25.16	Nylon Circle Tactile - Shankd			ø25		20
FTNHD25.16	Nylon Crosshatch Tactile - Shankd			ø25		20
FTNAS25.01	Nylon Anti-slip Tactile - Self Adhesive			ø25		20
FTNAS25.16	Nylon Anti-slip Tactile - Self Adhesive			ø25		20
FTNAS25.47	Nylon Anti-slip Tactile - Self Adhesive			ø25		20
FTNYA25.16	Nylon Circle Tactile			ø25		20
FTNCA25.16	Nylon Crosshatch Tactile - Self Adhesive			ø25		20
FASD25.01	Coarse Anti-Slip discs			ø25		250
FASD25.16	Coarse Anti-Slip discs			ø25		250
FASD25.47	Coarse Anti-Slip discs			ø25		250
FASD35.01	Coarse Anti-Slip discs			ø35		250
FASD35.16	Coarse Anti-Slip discs			ø35		250
FASD35.47	Coarse Anti-Slip discs			ø35		250
FTCD280.01	Stainless Steel Anti-Slip Shankd		25	280		250
FTCD280.16	Stainless Steel Anti-Slip Shankd		25	280		250
FTCD280.47	Stainless Steel Anti-Slip Shankd		25	280		250
FTCA280.01	Stainless Steel Anti-Slip Self Adhesive		25	280		250
FTCA280.16	Stainless Steel Anti-Slip Self Adhesive		25	280		250
FTCA280.47	Stainless Steel Anti-Slip Self Adhesive		25	280		250
FTPSD25.01,16,47	Polystud Anti Slip Tactile Shankd			ø25		20
FTPSA25.01,16,47	Polystud Anti Slip Tactile Self Adhesive			ø25		20

## Self Adhesive



## Shankd



## Nylon



## Stainless Steel


**NEW** Polystud


## Infill



## Channel





CODE	DESCRIPTION	H(mm)	W (mm)	D (mm)	L (m)	BOX
NRES.01	Tube of Resin					
NRES.16	Tube of Resin					
NRES.47	Tube of Resin					
NRES103.01	Anti Slip Tread Kit - 3 x 10mm Strip					
NRES103.16	Anti Slip Tread Kit - 3 x 10mm Strip					
NRES103.47	Anti Slip Tread Kit - 3 x 10mm Strip					
NRES103-STEN	Stencil		10		1,20	set 12 pc
NRES252.01	Anti Slip Tread Kit - 2 x 25mm Strip					
NRES252.16	Anti Slip Tread Kit - 2 x 25mm Strip					
NRES252.47	Anti Slip Tread Kit - 2 x 25mm Strip					
NRES252-STEN	Stencil		25		1,20	set 8 pc
NRES25D.01	Anti Slip Tread Kit - 25mm Disc					
NRES25D.16	Anti Slip Tread Kit - 25mm Disc					
NRES25D.47	Anti Slip Tread Kit - 25mm Disc					
NRES25D-STEN	Stencil		ø25		1,20	set 21 pc
NRES-CLEAN	Cleaner					
NRES-GUN	Applicator Gun					
NRES-NOZZ	Replacement Nozzle					
NRES-SQUEEGEE	Applicator Squeegee					

01 White



16 Black



47 Yellow



Kits include:  
 Tube of Resin  
 1.2m Stencils  
 Applicator Squeegee  
 Applicator Gun





CODE	DESCRIPTION	H (mm)	W (mm)	D (mm)	L (m)	BOX
EM8950.16	Romat Fluted Rubber	12				
EM8951.16	Romat Fluted Rubber	17				
EM8952.16	Romat Fluted Rubber	22				

16 Black



R8760



R8761 Connector Available


 R8752  
 Bevelled Edges

CODE	DESCRIPTION	H (mm)	W (mm)	D (mm)	L (m)	BOX
R8760.16	Rubber Grating	12,5		1,5m	1m	
R8752.16	Rubber Grating	12		1,5m	0,9m	

16 Black

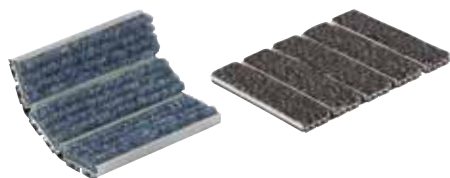


CODE	DESCRIPTION	H (mm)	W (mm)	D (mm)	L (m)	BOX
R8030.16	Romat Fluted Rubber	18				
R8031.16	Romat Fluted Rubber	12				

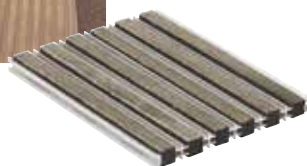
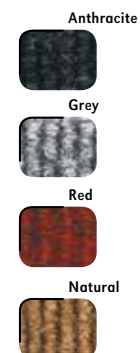
16 Black



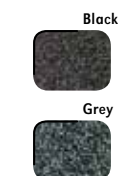




CODE	DESCRIPTION	H (mm)	W (mm)	D (mm)	L (m)	BOX
EM8900.anthracite	Romat Entrance Matting - Loop Pile and Polyamid	12				
EM8901.grey	Romat Entrance Matting - Loop Pile and Polyamid	12				
EM8902.natural	Romat Entrance Matting - Loop Pile and Polyamid	12				
EM8903.red	Romat Entrance Matting - Loop Pile and Polyamid	12				
EM8910.anthracite	Romat Entrance Matting - Loop Pile and Polyamid	17				
EM8911.grey	Romat Entrance Matting - Loop Pile and Polyamid	17				
EM8912.natural	Romat Entrance Matting - Loop Pile and Polyamid	17				
EM8913.red	Romat Entrance Matting - Loop Pile and Polyamid	17				
EM8920.anthracite	Romat Entrance Matting - Loop Pile and Polyamid	22				
EM8921.grey	Romat Entrance Matting - Loop Pile and Polyamid	22				
EM8922.natural	Romat Entrance Matting - Loop Pile and Polyamid	22				
EM8923.red	Romat Entrance Matting - Loop Pile and Polyamid	22				



CODE	DESCRIPTION	H (mm)	W (mm)	D (mm)	L (m)	BOX
R8000.grey	Reversible Superior insert	18				
R8016.black	Reversible Superior insert	18				
R8002.grey	Reversible Superior insert	12				
R8003.black	Reversible Superior insert	12				



CODE	DESCRIPTION	H (mm)	W (mm)	D (mm)	L (m)	BOX
R6115.silver	Bevelled Access Profile Aluminium	20			3	1 pc

